

# Wrightsville



Elevation A



Elevation C

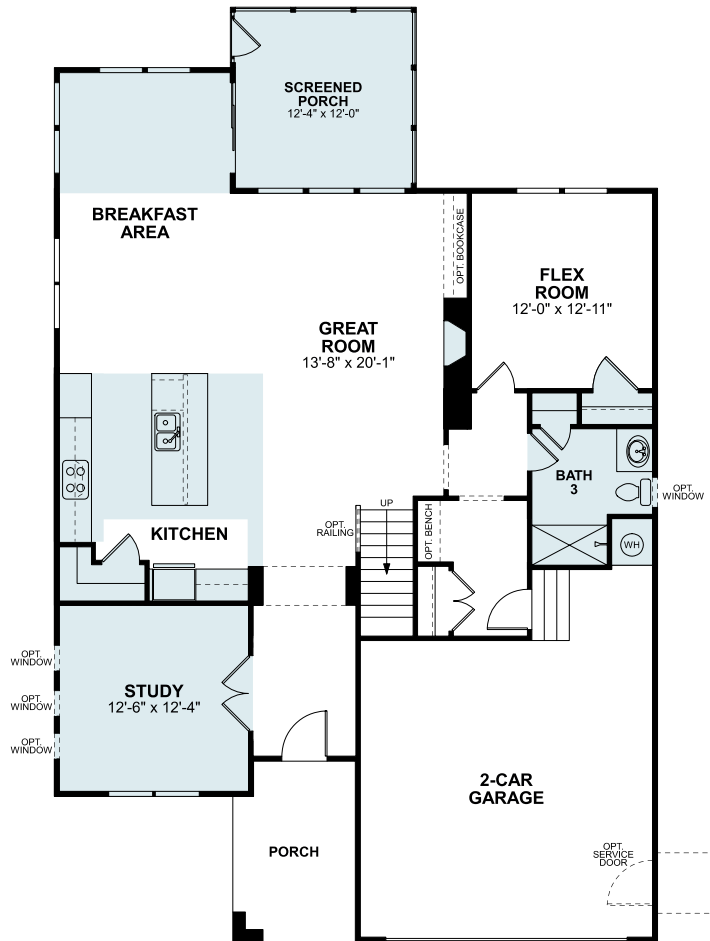
Because we are constantly improving our product, we reserve the right to revise, change, and/or substitute product features, dimensions, specifications, architectural details, and designs without notice. In addition, options shown may not be available in all communities. This brochure is for illustration purposes only and is not part of a legal contract. Prices are subject to change without notice. Room dimensions are approximate and calculated from inside of partition. Please see a New Home Consultant for details. Printed 07-21. Revision: 4/10/2023



M/I HOMES

# Wrightsville

## First Floor



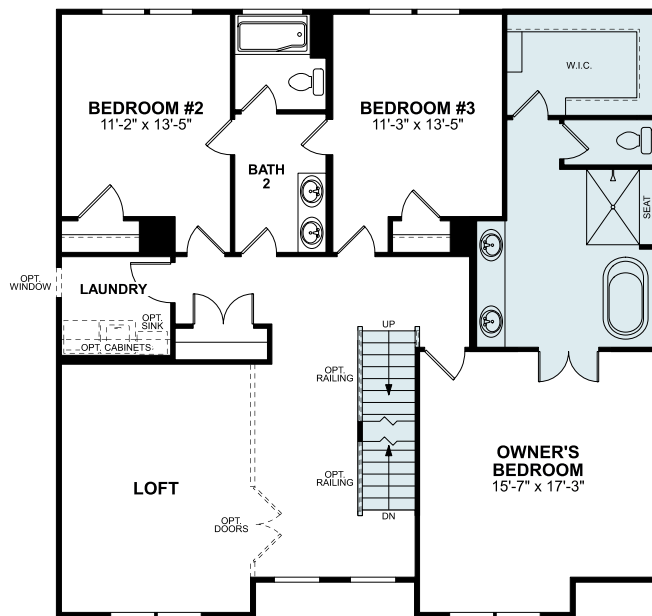
Because we are constantly improving our product, we reserve the right to revise, change, and/or substitute product features, dimensions, specifications, architectural details, and designs without notice. In addition, options shown may not be available in all communities. This brochure is for illustration purposes only and is not part of a legal contract. Prices are subject to change



M/I HOMES

# Wrightsville

## Second Floor



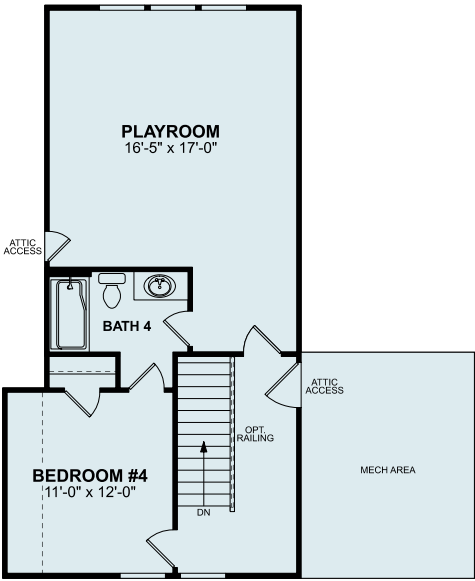
Because we are constantly improving our product, we reserve the right to revise, change, and/or substitute product features, dimensions, specifications, architectural details, and designs without notice. In addition, options shown may not be available in all communities. This brochure is for illustration purposes only and is not part of a legal contract. Prices are subject to change.



M/I HOMES

# Wrightsville

## Optional Third Floor



Because we are constantly improving our product, we reserve the right to revise, change, and/or substitute product features, dimensions, specifications, architectural details, and designs without notice. In addition, options shown may not be available in all communities. This brochure is for illustration purposes only and is not part of a legal contract. Prices are subject to change from inside of partition. Please see a New Home Consultant  
revision: 4/10/2023



M/I HOMES