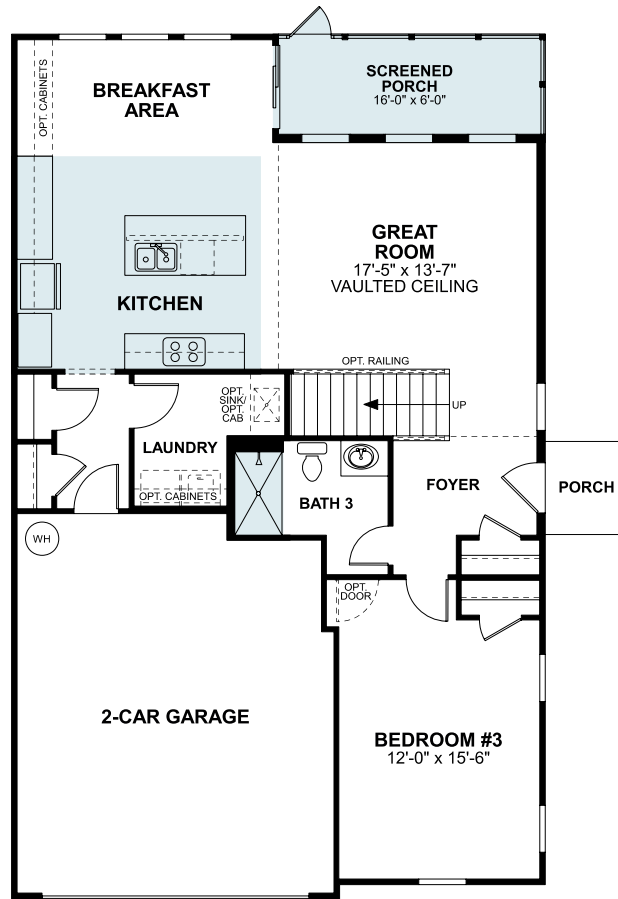


# Lily

## First Floor



Available options for this floor:

Elevation B, Fireplace, Bath 3 Shower, Gourmet Kitchen, Covered Porch, Screened Porch



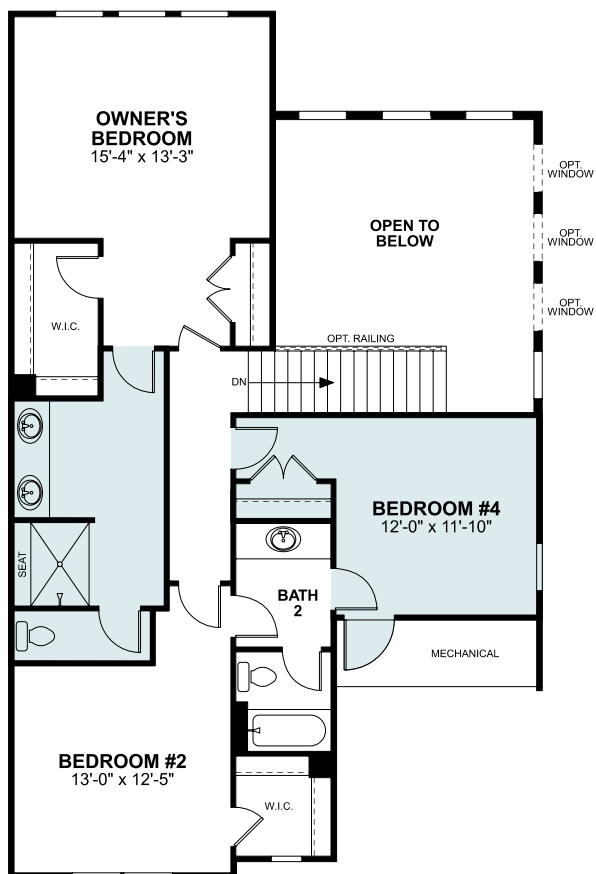
Because we are constantly improving our product, we reserve the right to revise, change, and/or substitute product features, dimensions, specifications, architectural details, and designs without notice. In addition, options shown may not be available in all communities. This brochure is for illustration purposes only and is not part of a legal contract. Prices are subject to change without notice. Room dimensions are approximate and calculated from inside of partition. Please see a New Home Consultant for details. Printed 07-21. Revision: 6/28/2024



M/I HOMES

# Lily

## Second Floor



Available options for this floor:

Elevation B, Bedroom #4, Deluxe Owner's Bath



Because we are constantly improving our product, we reserve the right to revise, change, and/or substitute product features, dimensions, specifications, architectural details, and designs without notice. In addition, options shown may not be available in all communities. This brochure is for illustration purposes only and is not part of a legal contract. Prices are subject to change without notice. Room dimensions are approximate and calculated from inside of partition. Please see a New Home Consultant for details. Printed 07-21. Revision: 6/28/2024



M/I HOMES

# Lily



Lily A & B - shown w/Opt Stone Water Table



Because we are constantly improving our product, we reserve the right to revise, change, and/or substitute product features, dimensions, specifications, architectural details, and designs without notice. In addition, options shown may not be available in all communities. This brochure is for illustration purposes only and is not part of a legal contract. Prices are subject to change without notice. Room dimensions are approximate and calculated from inside of partition. Please see a New Home Consultant for details. Printed 07-21. Revision: 6/28/2024



M/I HOMES